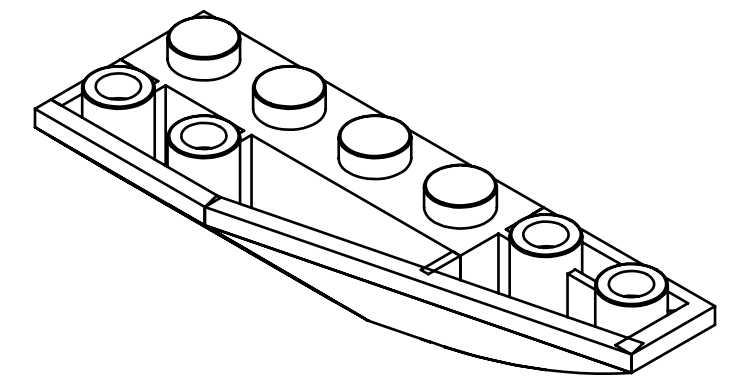
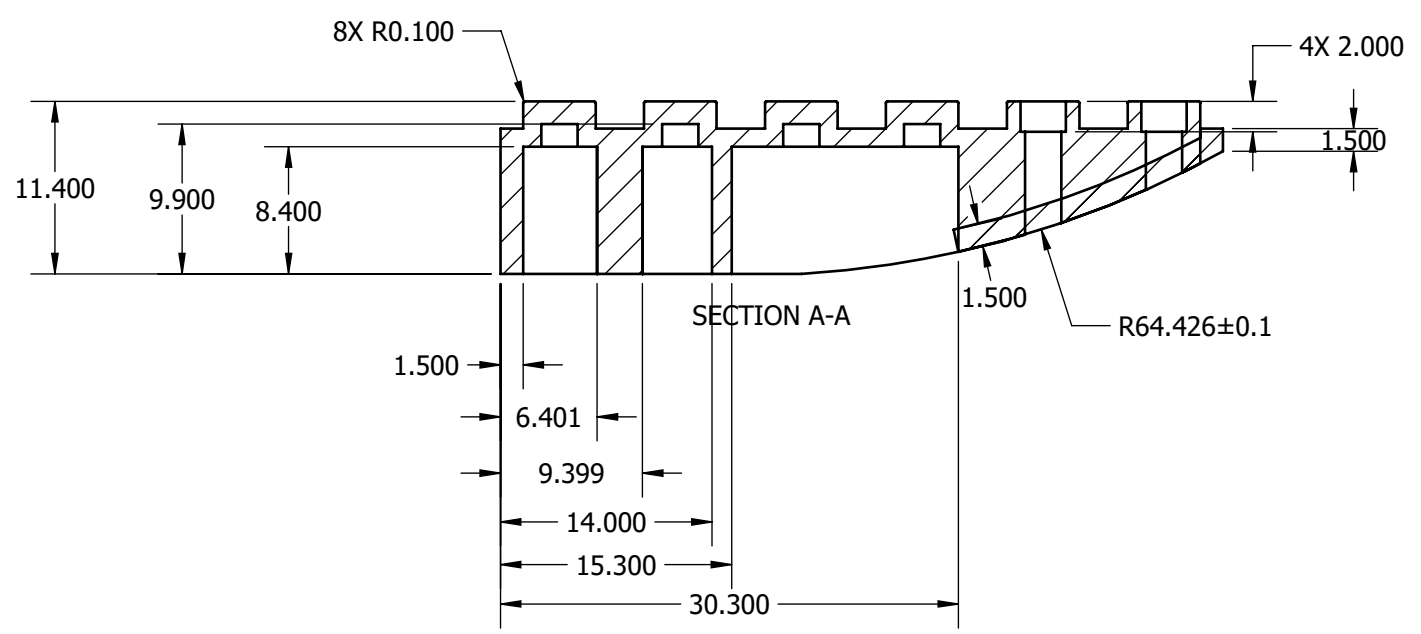
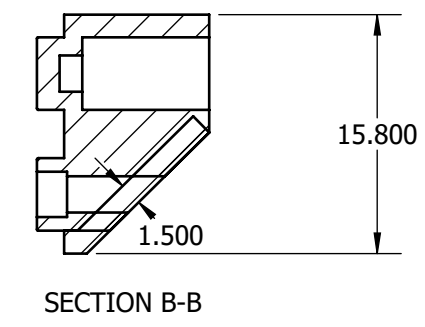
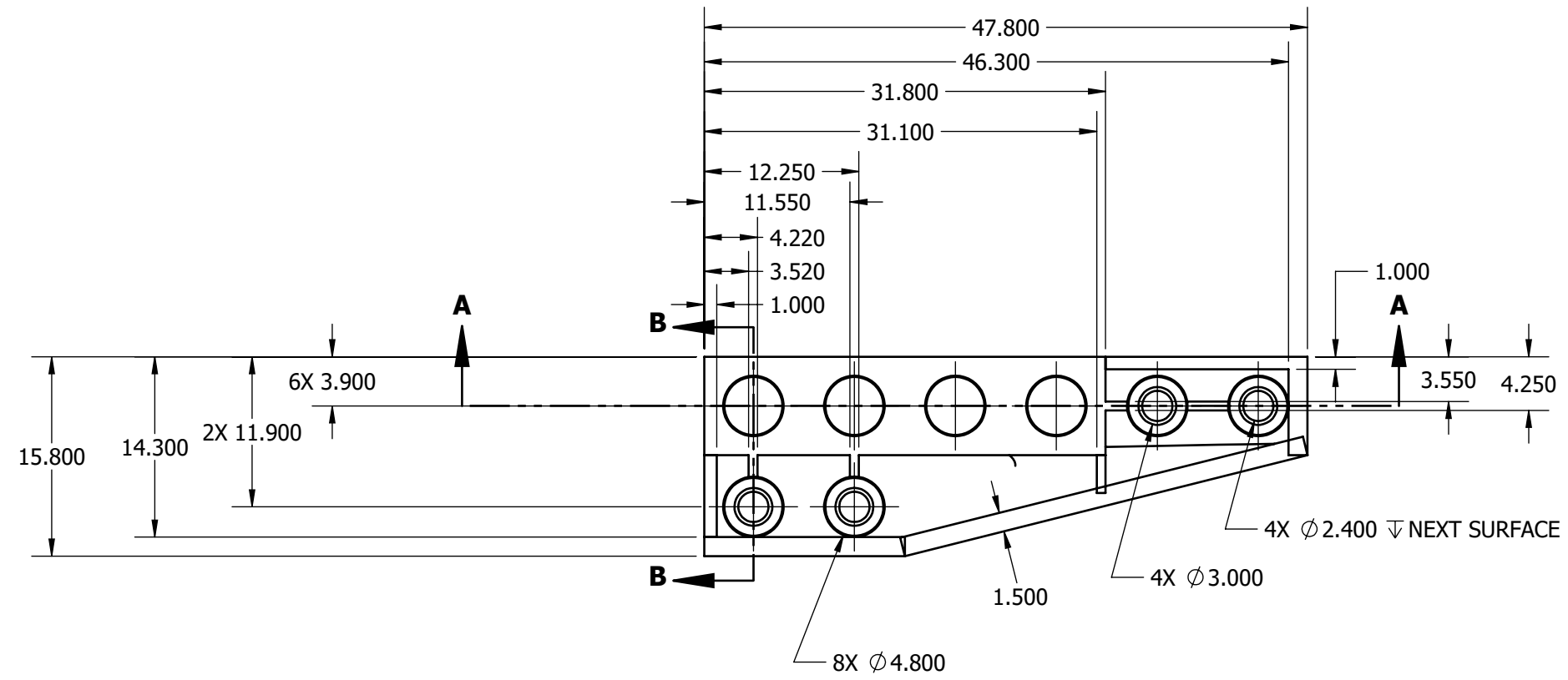


REVISIONS		
REV.	DESCRIPTION	DATE
A	INITIAL RELEASE	12/4/2024



- NOTES**
- THE 4 STANDALONE STUDS ARE HOLLOWED TILL THE BOTTOM SURFACE WHICH HAS A UNIFORM THICKNESS OF 1.5 MM (AS INDICATED IN SECTION VIEWS)
 - INNER RIBS ARE 0.70 MM THICK

PROPRIETARY AND CONFIDENTIAL

THE INFORMATION CONTAINED IN THIS DRAWING IS THE SOLE PROPERTY OF THE UNIVERSITY OF COLORADO. ANY REPRODUCTION IN PART OR AS A WHOLE WITHOUT WRITTEN PERMISSION IS PROHIBITED.

TOLERANCES:
 X.X ±0.1
 X.XX ±0.010
 X.XXX ±0.005
 X.X° ±1°


UNLESS OTHERWISE SPECIFIED:
 DRAWING UNITS: MILLIMETERS
 INTERPRET DRAWING PER ASME Y14.100
 INTERPRET DIMENSIONS PER ASME Y14.5M

MATERIAL:
 ABS RED
FINISH:
 NONE

DRAWN:
 JULIA ABOUD

CHECKER:
 N/A

MANUFACTURING ENGINEER:
 N/A



UNIVERSITY OF COLORADO
 1111 ENGINEERING DRIVE
 BOULDER, CO 80309-0427
 MCEN 1025

DESCRIPTION:
 2X6 INVERTED RIGHT WEDGE

PART NUMBER:
 454431

DATE:
 12/4/24

REV:
 A

SIZE: B

SHEET: 1 of 1